

# DCM

## Corporation

---

### TripleTime™ Three-Piece Loudspeaker System Owner's Instructions

Thank you for choosing the TripleTime loudspeaker system. We are proud of our products and confident that you will discover the many benefits of the advanced technology incorporated in the TripleTime.

#### UNPACKING

Handle the components of your new TripleTime system with care—pressing against the fronts of the speakers can damage them.

After unpacking your loudspeakers, **save the box and all packing materials**—in the unlikely event that you need to return a loudspeaker for warranty service, the authorized packing material *must* be used. At this time you should fill out both warranty cards, including serial numbers and the date of purchase. Keep one card for your records; mail the other card to us and we will validate your warranty.

#### TRIPLETIME SETUP AND PLACEMENT

The TripleTime is a three-piece system designed to provide full-range sound out of very small cabinets. The TripleTime's design parameters allow it to be as visible or invisible as your decor dictates. Set-up is quite easy if done in the following manner:

1. Before connecting anything, turn off your amplifier and unplug it from the AC outlet.
2. You will need four new pieces of speaker wire to connect the satellite speakers to the bass unit and the bass unit to your amplifier. In general, we suggest you use good 16-gauge wire; your audio salesperson may offer specific suggestions. Cut appropriate lengths of speaker wire and remove about a half-inch of insulation from each end. Carefully twist the exposed strands of wire so the positive and negative sides cannot possibly touch—otherwise, you could damage your amplifier. **Helpful hint:** Most speaker wire is color-coded with red (copper) for positive (+) and black (silver) for negative (-). Make sure you connect positive wires to positive terminals and negative to negative: this ensures that the system will operate in correct phase and reproduce maximum bass response.
3. On the rear of the bass module are two cups, each with two sets of input/output terminals. Each set has two spring-loaded connectors (one red and one black). Run wire from the amplifier's right output to the bass unit's bottom terminal cup; push the plastic terminal lever, insert the wire, and release the lever. Repeat this process for the left channel, running wire from the amplifier's left output to the bass unit's top terminal cup.

4. Run wire from your right satellite loudspeaker to the bass unit's bottom terminal and from your left satellite loudspeaker to the bass unit's top terminal.
5. Now you may plug in your amplifier.

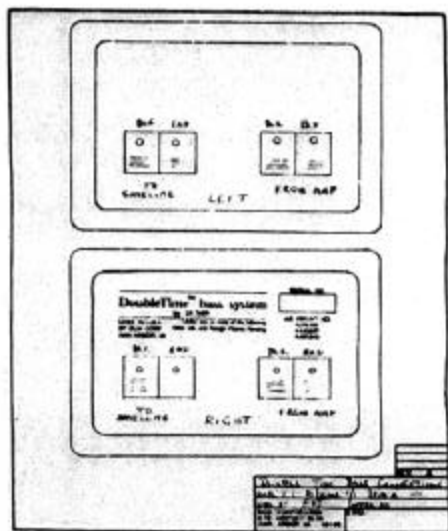
## TRIPLETIME PLACEMENT

This system is very flexible and is designed to be used in a variety of settings. In most cases, specific placement of the bass unit is not critical to overall performance, but bass energy *will* increase as the bass unit is moved closer to the walls and corners. Many people begin placement of the satellite speakers with the listener's position as the focal point of an equilateral triangle. However, the TripleTime's coaxial technology allows its components to be placed almost anywhere without compromising sound quality. The system works well with the bass unit near a corner on the floor and the satellite speakers on a bookshelf or speaker stands or mounted directly on the wall. In most cases, placement that looks good sounds good as well.

We recommend any high-grade furniture polish for the solid oak tops and bottoms. Do not place the TripleTime system near radiators or any other heat source such as direct sunlight, which may bleach the wood and fade the grilles.

## WHAT TO DO IF YOU NEED SERVICE

DCM loudspeakers have a history of extremely high reliability. However, if they should require service, contact your dealer. If your dealer is at an inconvenient distance, please contact DCM Corporation directly. Remember, if you send your speakers back for service, they must be packaged in authorized boxes.



## CONTENTS

The TripleTime Three-Piece Loudspeaker system consists of two HalfTime satellite speakers and one DoubleTime Bass unit.